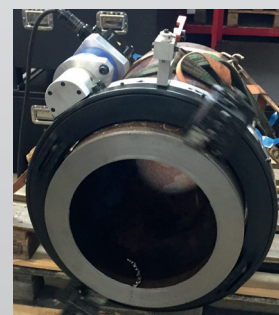


NEW

# NEW MOTOR OPTION FOR DLW PIPE COLD CUTTING MACHINES

Servo Drive Motor for cold pipe cutting machines:

- available in 230V and 400V
- heavy wall beveling and cutting



Servo Drive Controller for on site work:

- shock proof, corrosion proof
- big bright screen
- emergency stop



Speed, torque and current are controlled and displayed during complete cutting and beveling process.

